

Arts preview...

East meets West as UNH Gallery opens new season

DURHAM — Two exceptional exhibitions, including works rarely seen by American viewers, will open at the University of New Hampshire's art museum, The Art Gallery.

Works by four renowned master woodblock printmakers from China's Hebei Province, featured in "Realized in Wood: Contemporary Prints from China", present the outlook and concerns of the Chinese people today, with an underlying commentary on the social and political implications brought on by governmental control.

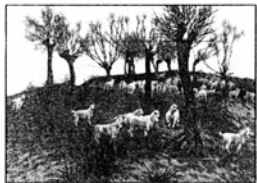
The second exhibition, "Tabletop Arenas: Still Life Paintings by Zeuxis", highlights works by American still life painters who are members of the Zeuxis group and presents their personal interpretations of tabletop surfaces and objects.

"Through the rich, symbolic content of the Chinese woodblock prints, coupled with the focus on common objects in the works by the Zeuxis painters, we can explore two aspects of the world of art simultaneously.

Historic events, artistic expression, social commentary, and masterly techniques all come together under one roof in these two exhibitions that are both thought provoking and visually stimulating," says Vicki Wright, director of The Art Gallery.

The opening reception for both exhibitions will be held Tuesday, Sept. 7, 2004, from 5 - 7:30 p.m.

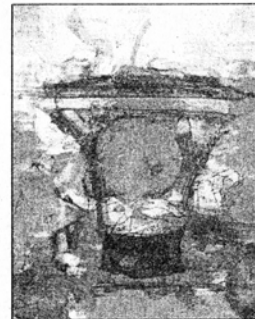
The exhibitions are open to the public free of charge and will remain on view through Oct. 20.



Li Yan Peng, *Sand Willows, 1997*, color reproduction



Dong Jiansheng, *Da Qi, 2000*, woodcut



Ben Frank Moss, *Still Life Color No. 16, 2003*



Teng Yu Feng, *Lucky Year, 1999*, woodcut

Realized in Wood: Contemporary Prints from China

In "Realized in Wood", two generations of artists express their concern for China's future with a range of personal expression, style and diversity of imagery. Elder artist Dong Jiansheng creates black-and-white woodcuts of stories and subjects common to China's peasant communities. Li Yanpeng carves the harsh, rugged landscape of the Hebei and Shanxi Provinces to symbolize the lives of people in the area. Teng Yufeng's meticulous marks produce varying shades and textures that depict the people of northern China.

Zhang Minjie's subjects are approached on a more psychological level — questions are posed about what is seen or perceived using themes of population, production, and politics in a whimsical manner. The exhibition was curated by Renee Covalucci, printmaker and adjunct assistant professor at the Art Institute of Boston.

Tabletop Arenas: Still Life Paintings by Zeuxis

Tabletop Arenas: Still Life Paintings by Zeuxis presents works by the painters of Zeuxis and their guests that focus on the tabletop as an "arena for

meditation." Highlighting the table's surface as an altar, stage, or depiction of domestic life, this thought-provoking exhibition manages to make that familiar surface distinctive, memorable, or wonderfully strange. Along with the 24 Zeuxis artists, six guest artists are also featured: Lennart Anderson, William Bailey, Ken Kewley, Gabriel Laderman, Langdon Quin, Sandra Stone, and Susannah Phillips.

The Art Gallery presents exhibitions, related ArtBreak programs and special events, as well as scheduled guided exhibition tours to the general public

free of charge. Hours of operation during the academic year are Monday - Wednesdays, 10 a.m. - 4 p.m.; Thursdays from 10 a.m. - 8 p.m.; and Saturdays and Sundays from 1 p.m. - 5 p.m. The museum is closed on Fridays and university holidays.

Guided groups tours for schools, organizations, clubs, and others are available for advanced scheduling by contacting Catherine Wright, Education and Publicity Coordinator, at 603-862-3713 or at catherine.wright@unh.edu. For more information on the exhibits and special events, contact The Art Gallery at 603-862-3712 or at art.gallery@unh.edu.